



7V—2 QT. BAKER/BEAN POT 9.25  
7V/W—BAKER & WARMER, SET 16.50



7FL—10" PLATE 6.00  
7F—9" PLATE 4.00  
7G—7" PLATE 3.50  
7E—5" SAUCER 2.75



7D—2 QT. PITCHER 9.25



7W—3 QT. BAKER/BEAN POT 13.25  
7W/W—BAKER & WARMER, SET 20.50



7B—SUGAR WITH LID 5.00



7A—6 OZ. CREAMER 3.25



7C—CUP 3.25



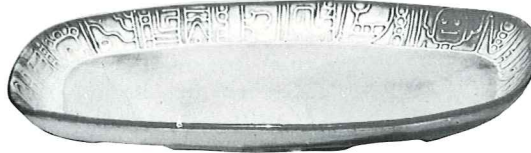
7M—14 OZ. MUG 4.50



\*C4—12 OZ. COFFEE MUG 3.25



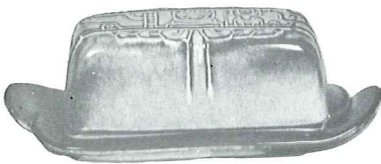
7H—SALT & PEPPER 4.75



7QS—13" STEAK PLATTER (SHALLOW PLATTER) 5.00



7XO—8 OZ. FRUIT 2.75



7K—BUTTER DISH 6.50



7Q—13" DEEP PLATTER 7.75



\*243—6 1/2" CRESCENT SALAD 2.50



7X—14 OZ. CHILI-SOUP 3.25



7PS—9" TRAY 3.75



7XL—20 OZ. SALAD 3.75



7J—2 CUP TEAPOT 6.50



7FC—15" CHOP PLATE 25.00



7N—1 QT. VEGETABLE BOWL 4.75



7T—6 CUP TEAPOT 9.25



7TP—17" AZTEC OVAL PLATTER 17.50



\*242 CORN DISH 2.50

THIS PAGE AVAILABLE IN PRAIRIE GREEN, DESERT GOLD, AND WHITE SAND.

\*AVAILABLE IN 10 COLORS — ADD 50% FOR FLAME NO TERRA COTTA

SIZES ARE APPROXIMATE AND MAY VARY SLIGHTLY.